

**Series 4, Built-in oven, 60 x 60 cm,  
Stainless steel  
HBA234BR0J**



**Included accessories**

1 x combination grid  
1 x universal pan

**The built-in oven with 3D hotair: achieve perfect baking and roasting results on up to three levels simultaneously.**

- **LED-display control, red:** easy-to-use thanks to the time functions.
- **EcoClean Direct:** less cleaning effort thanks to a special coating of the rear wall that automatically absorbs grime.
- **Cleaning Assistance:** less cleaning effort thanks to the new cleaning option, which can be especially used for cleaning of light soiling.

**Technical Data**

Gross weight : 33.2 kg  
Color / Material Front : Stainless steel  
Built-in / Free-standing : Built-in  
Integrated Cleaning system : Catalytic partial, Hydrolytic  
Required niche size for installation (HxWxD) : 585-595 x 560-568 x 550 mm  
Dimensions : 595 x 594 x 548 mm  
Dimensions of the packed product (HxWxD) : 675 x 690 x 660 mm  
Control Panel Material : Glass  
Door Material : Glass  
Net weight : 31.0 kg  
Usable volume of cavity : 71 l  
Heating modes : Bottom heat, Full width grill, Hot Air, Hotair gentle, Hot air grilling, Pizza setting, Top/bottom heat  
First cavity material : Other  
Number of interior lights : 1  
Length electrical supply cord : 120 cm  
Interior Lights - cavity 1 : 1  
Pull-out system : Accessory  
Clock function : Alarm, Off, On  
Included accessories : 1 x combination grid, 1 x universal pan  
Broil Element Wattages cavity 1 : 2700 W  
Convection Element Wattages cavity 1 : 1600 W  
Energy efficiency rating : A  
Energy consumption per cycle conventional (2010/30/EC) : 0.97 kWh/cycle  
Energy consumption per cycle forced air convection (2010/30/EC) : 0.81 kWh/cycle  
Energy efficiency index (2010/30/EC) : 95.3 %  
Connection Rating : 2900 W  
Fuse protection : 13 A  
Voltage : 220-230 V  
Frequency : 60; 50 Hz  
Plug type : GARDY plug w/ earthing  
Color / Material Front : Stainless steel  
Energy input : Electric  
Required cutout/niche size for installation (in) : x x  
Dimensions of the packed product : 26.57 x 25.98 x 27.16  
Net weight : 68.000 lbs  
Gross weight : 73.000 lbs  
Length electrical supply cord : 120 cm  
Net weight : 31.0 kg



## **Series 4, Built-in oven, 60 x 60 cm, Stainless steel HBA234BR0J**

**The built-in oven with 3D hotair: achieve perfect baking and roasting results on up to three levels simultaneously.**

### **Dimensions:**

- Appliance dimension (hxwxh): 595 mm x 594 mm x 548 mm
- Niche dimension (hxwxh): 585 mm - 595 mm x 560 mm - 568 mm x 550 mm
- "Please reference the built-in dimensions provided in the installation drawing"

---

### **Type of oven / heating system:**

- Oven with 7 heating methods: 3D hotair, Conventional heat, Hot air grilling, Full width grill, Pizza setting, Bottom heat, Hotair gentle
- Temperature range 50 °C - 275 °C
- Cavity volume: 71 l

### **Hook-in racks / rails**

- Number of shelf levels: 5 PC
- Accessory

### **Design:**

- Rotary Control
- Extra large capacity oven with grey enamel

### **Cleaning:**

- EcoClean Direct: coating of back panel

### **Comfort:**

- LED-display control (red)
- Electronic clock
- automatic start  
Heating-up control
- Bar handle
- Rapid heating-up
- Halogen interior lighting
- Integral cooling fan

### **Accessory:**

- combination grid, universal pan

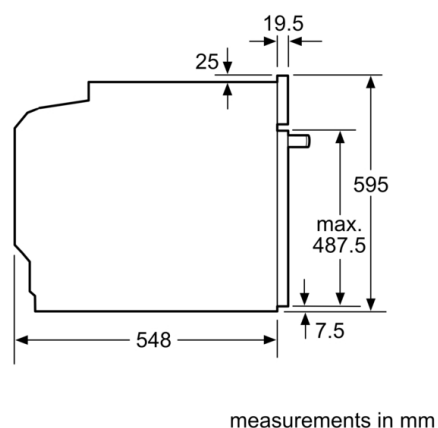
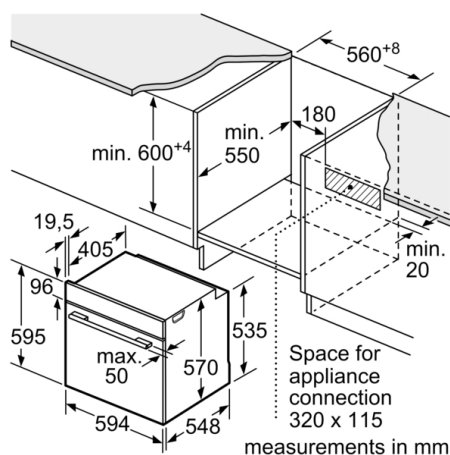
### **Environment and Safety:**

- Child lock

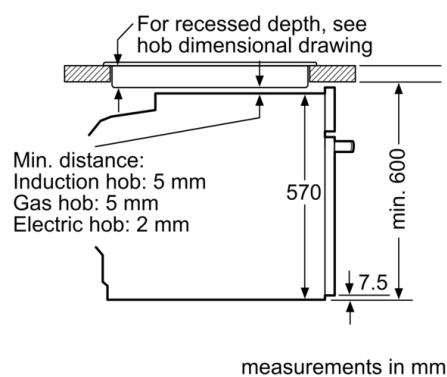
### **Technical Information**

- Length of mains cable: 120 cm
- Nominal voltage: 220 - 230 V
- Total connected load electric: 2.9 kW
- Energy efficiency rating (acc. EU Nr. 65/2014): A(at a range of energy efficiency classes from A+++ to D)  
Energy consumption per cycle in conventional mode: 0.97 kWh  
Energy consumption per cycle in fan-forced convection mode: 0.81 kWh  
Number of cavities: 1 Heat source: electrical Cavity volume: 71 l

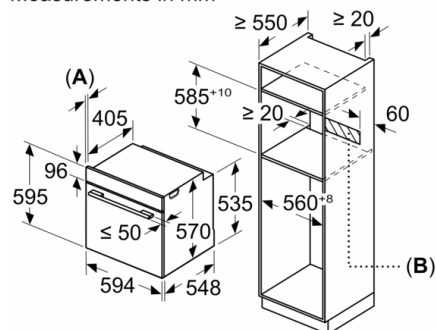
## Series 4, Built-in oven, 60 x 60 cm, Stainless steel HBA234BR0J



Installation with a hob.



Measurements in mm



A: 19.5 mm  
B: Space for appliance connection 320 x 115 mm