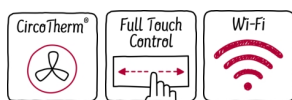


N 90, Built-in compact oven with microwave function, 60 x 45 cm, Graphite-Grey
C28MT27G0



COOKING PASSION SINCE 1877



Compact built-in oven with integrated microwave and an innovative Multipoint Meatprobe - even more ways to cook dishes to perfection, quickly and conveniently

- ✓ CircoTherm – Smart hot-air solution that lets you bake on up to four levels.
- ✓ Combined microwave and oven - The convenient solution to save space and time.
- ✓ Full Touch Control – Simple, precise control by touch on the high-resolution TFT colour display.
- ✓ Wi-Fi enabled oven - Unleash your creativity via the Home Connect app.
- ✓ Baking and Roasting Assistant with Automatic Programmes - The duo for optimal baking at your command.

Features

Technical Data

Type of micro-wave oven : MW-Combi
Type of control : Electronic
Color / Material Front : Graphite
Cavity dimensions : 237.0 x 480 x 392.0 mm
Approval certificates : CE, VDE
Length electrical supply cord : 150 cm
Net weight : 37.3 kg
Gross weight : 40.6 kg
EAN code : 4242004255420
Maximum micro-wave power : 900 W
Connection Rating : 3600 W
Fuse protection : 16 A
Voltage : 220-240 V
Frequency : 50; 60 Hz
Plug type : Garty plug w/ earthing
Cavity dimensions : 237.0 x 480 x 392.0 mm



4 242004 255420

*N 90, Built-in compact oven with microwave
function, 60 x 45 cm, Graphite-Grey
C28MT27G0*



COOKING PASSION SINCE 1877

Features

Heating Functions

- Compact oven with microwave with 13 cooking functionsheating methods:
CircoTherm / HotAir
Full surface grill Dough proving CircoTherm Eco Centre area grill
Top/Bottom heat Top/Bottom heat Eco CircoTherm Intensive /
Pizza setting Low temperature / slow cooking Bottom heat
CircoRoasting Plate warming Keep warm
- Additional heating methods with microwave:
Microwave, 5 power levels
Combination microwave and conventional oven
- Temperature range 30 °C - 300 °C
- Max. Power: 900 W; 5 Microwave power settings (90 W,180 W,360 W,600 W,900 W) with Inverter (MW)
- Intelligent inverter technology: maximum output power will be regulated to 600 W when used in longer operation

Design

- Cavity volume: 45 l
- Graphite-Grey Edition
- Anthracite enamel cavity with 3 shelf positions
- Full Touch Control

Cleaning

- Pyrolytic self-cleaning: The fastest way to clean an oven. At 485°C everything turns to ash, so no chemical cleaners are necessary with this cleaning method. When the program is finished, just let the oven cool down and wipe it out with a damp cloth. That's all there is to it
- Easy Clean cleaning program: Just add 400ml water and a drop of washing-up liquid in the base pan (recessed area on the bottom of the oven cavity) and run the EasyClean program. This helps to soften baked-on residue so that you can just wipe it down for fast and uncomplicated cleaning

Convenience

- 5.7" TFT colour and graphics display with FullTouch control
- Automatic Temperature control for each function
Optical temperature control Actual temperature display automatic programming Sabbath function Meat probe
- Built in cooking functions: Baking and Roasting Assistant: Takes the guess work out by recommending the ideal heating mode, temperature and time for a wide variety of dishes, which you can manually adjust to your desire to ensure perfect results, Automatic programs: Select a program, enter the weight of your food, and

the automatic program will apply the most optimal settings, no manual settings required

- automatic programming, 14 automatic programs
- MultiPoint MeatProbe: measures the inside heat at three points to ensure the right core temperature is reached and the meat is cooked for the correct duration of time
- Electronic clock
- Rapid heat-up: Reduce the preheat time at the touch of a button
- Independent oven interior light button, LED lighting
- Cooling fan
- Stainless-steel fan
- Individual adjustable child lock
Residual heat indicator Safety switch off Start button door contact switch Automatic door lock during pyrolysis Automatic door lock during pyrolysis
- HomeConnect ready on Wi-Fi, Home Connect helps you to unleash your cooking creativity by allowing you to manage your oven and coffee machine over your Wi-Fi. Tap via the app, speak to your oven with voice control, and make appliances interact with one another automatically. Home Connect is an ever-growing platform that brings the future to your kitchen.

Rails

- Telescopic rails: Telescopic rail (1 level), standard extension, pyrolytic proof

Accessories

- Enamelled baking tray, combination grid, 1 x Universal pan

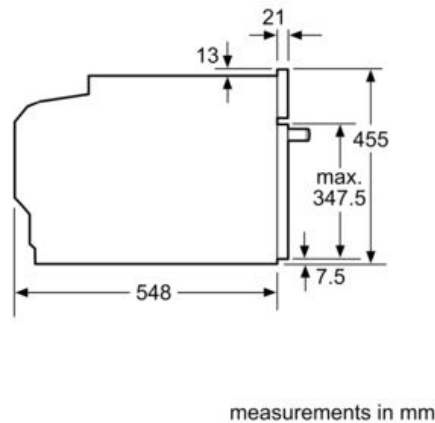
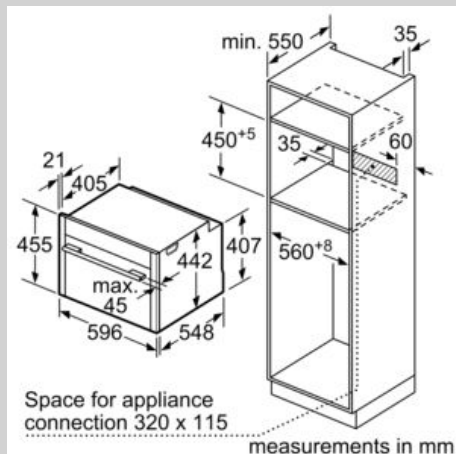
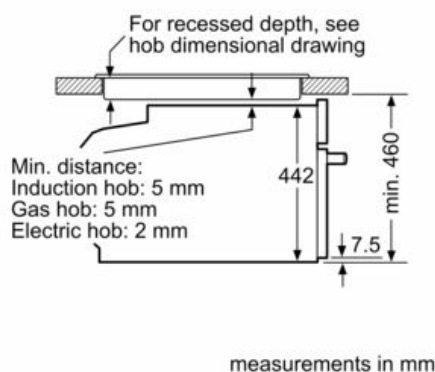
Technical Information

- Length of mains cable: 150 cm
- Total connected load electric: 3.6 KW
- Appliance dimension (HxWxD): 455 mm x 596 mm x 548 mm
- Installation dimensions (HxWxD): 450 mm - 455 mm x 560 mm - 568 mm x 550 mm
- Please reference the built-in dimensions provided in the installation drawing

N 90, Built-in compact oven with microwave
function, 60 x 45 cm, Graphite-Grey
C28MT27G0

Dimensioned drawings

Installation with a hob.



If the compact appliance will be installed underneath a hob, the following worktop thicknesses (including substructure if necessary) must be taken into account.

Hob type	min. worktop thickness	
	fitted	flush
Induction hob	42 mm	43 mm
Full surface Induction hob	52 mm	53 mm
Gas hob	32 mm	43 mm
Electric hob	32 mm	35 mm

