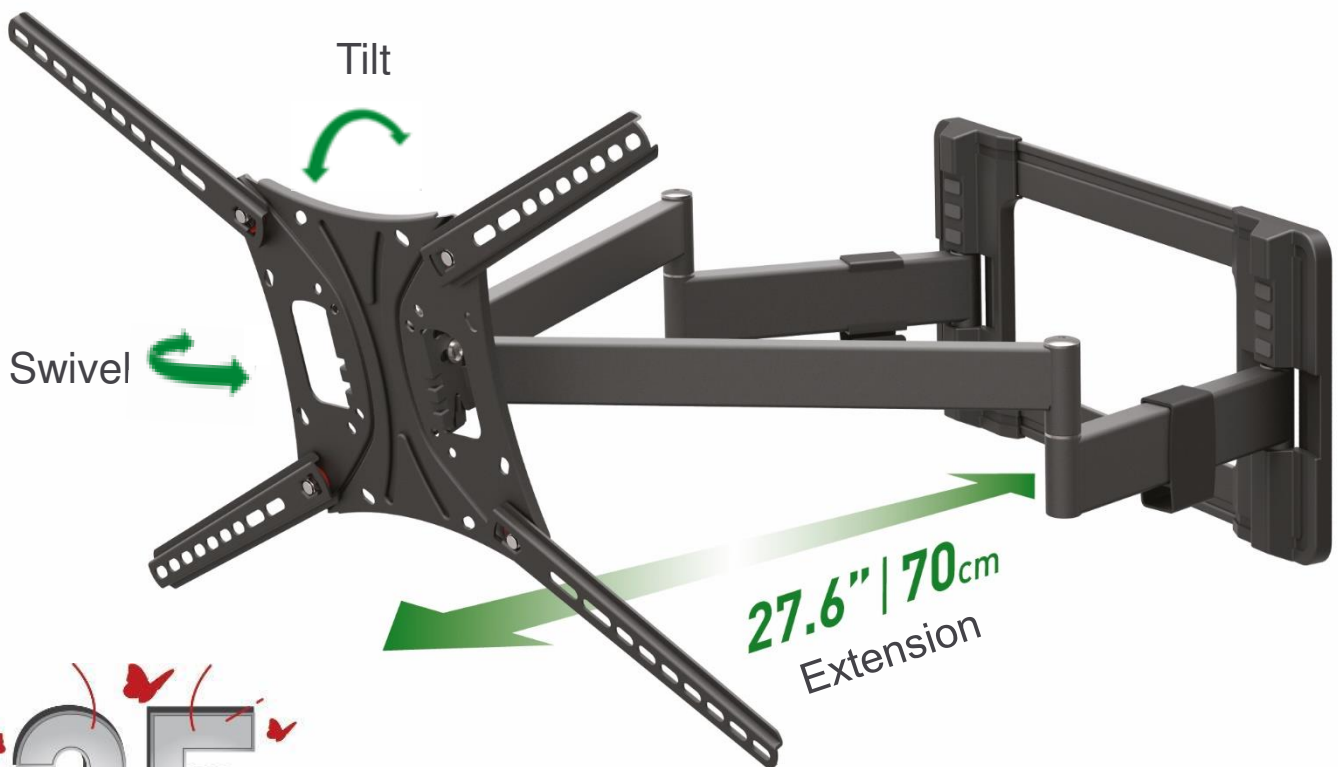


Long Dual Arm TV Wall Mount

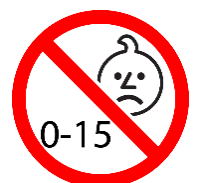
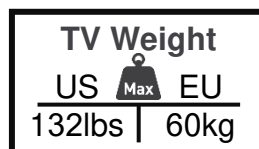


Download Assembly Instructions with Text

For more information: [barkanmounts.com](https://www.barkanmounts.com)

If you are satisfied with the product, please give us a 5 stars ★★★★★ rating on the website you bought it from. If you are not satisfied please contact us at <https://www.barkanmounts.com/support> and we will solve the problem for you.

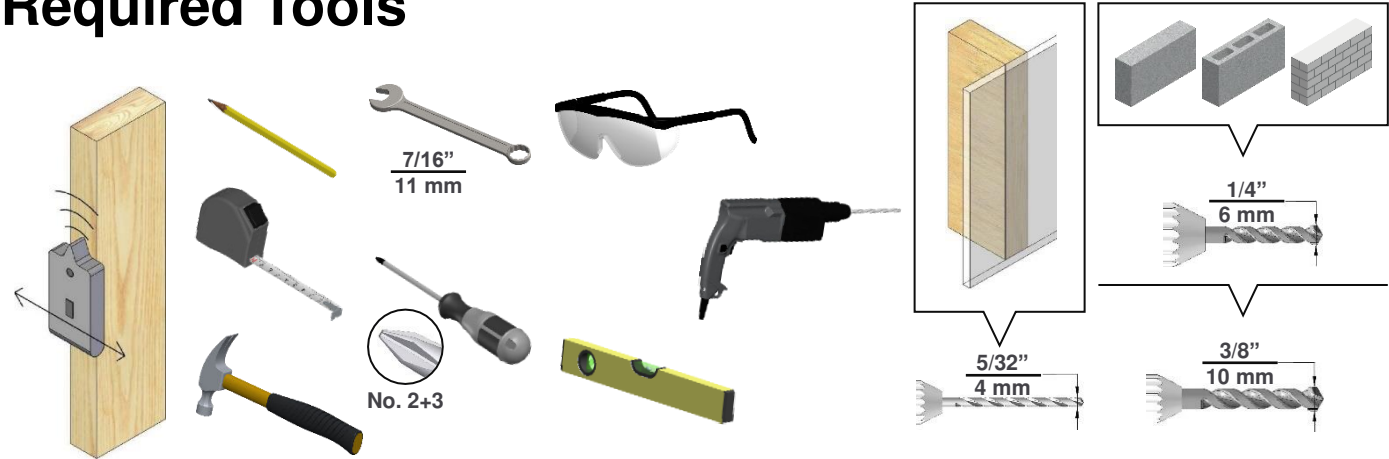
BM464L-MAN-ONL2304

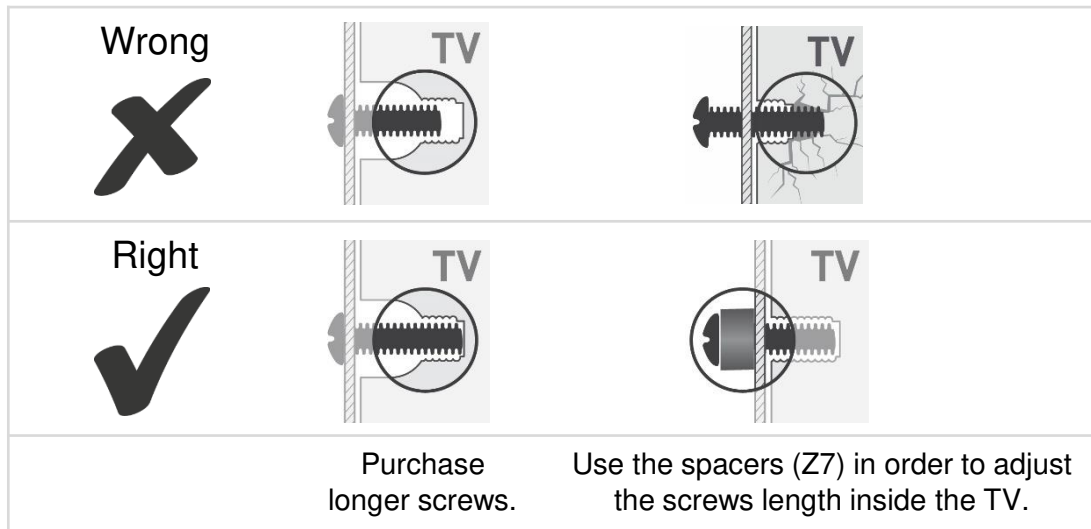


**Safety instructions and installation warnings (provided separately)
must be read in full, prior to assembly.**

A Bracket  x1	B Front Arms  x1	C TV Plate  x1	D Adaptor  x4	E Drilling Template  x1																														
Z6  x8	Z7  x4	Z8  x4	S1 Sticker  x6	W1  x6																														
W2  x6	W3  x6	Y1  x2	Y2  x2	Y3  x1																														
Y4 Wall Plate Plastic Cover  x1	Y5 Wall Plate Plastic Cover  x1	Y6 Cable Management  x2	P1  x4	P2  x2																														
P3  x2	<div></div> <table><tr><th>#</th><th>M</th><th>L mm</th><th>L inch</th><th>pcs</th></tr><tr><td>Z1</td><td>4</td><td>20</td><td>3/4</td><td>4</td></tr><tr><td>Z2</td><td>6</td><td>16</td><td>5/8</td><td>4</td></tr><tr><td>Z3</td><td>6</td><td>25</td><td>3/4</td><td>4</td></tr><tr><td>Z4</td><td>8</td><td>25</td><td>1</td><td>4</td></tr><tr><td>Z5</td><td>8</td><td>45</td><td>1 3/4</td><td>4</td></tr></table>				#	M	L mm	L inch	pcs	Z1	4	20	3/4	4	Z2	6	16	5/8	4	Z3	6	25	3/4	4	Z4	8	25	1	4	Z5	8	45	1 3/4	4
#	M	L mm	L inch	pcs																														
Z1	4	20	3/4	4																														
Z2	6	16	5/8	4																														
Z3	6	25	3/4	4																														
Z4	8	25	1	4																														
Z5	8	45	1 3/4	4																														

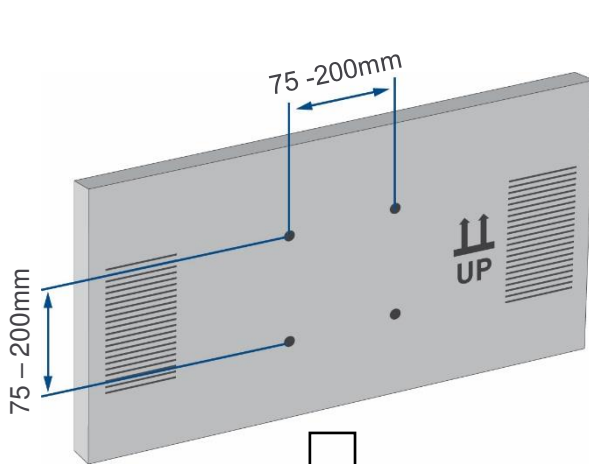
Required Tools



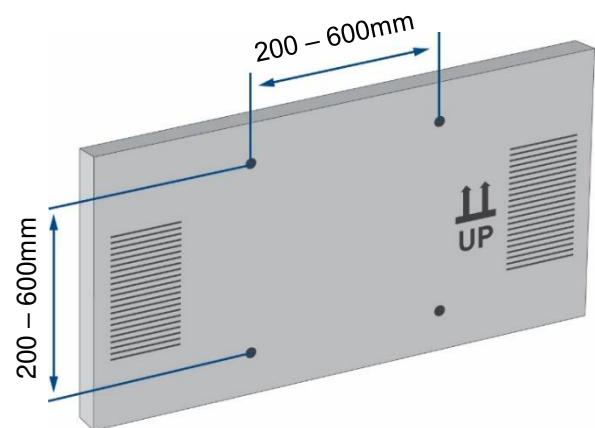


1

Continue according to your TV mounting hole pattern.



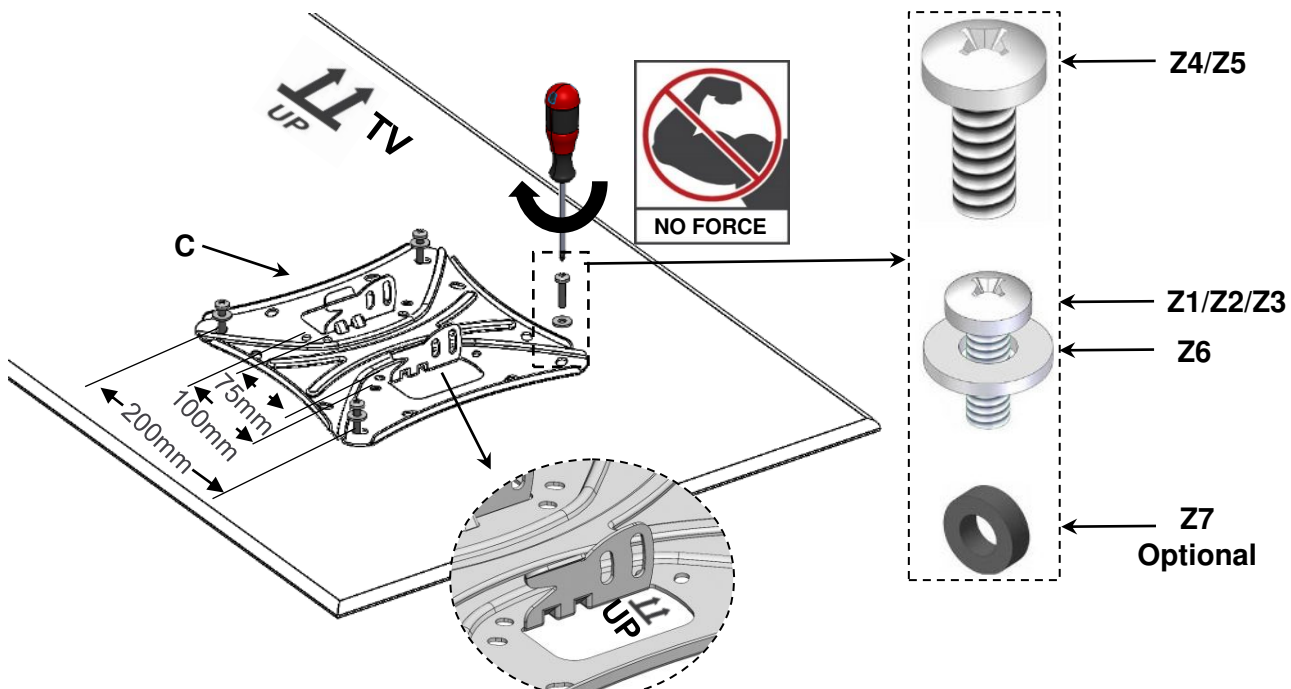
1a



1b

Page 4

1a 75x75 mm up to 200X200 mm (inclusive) hole pattern.

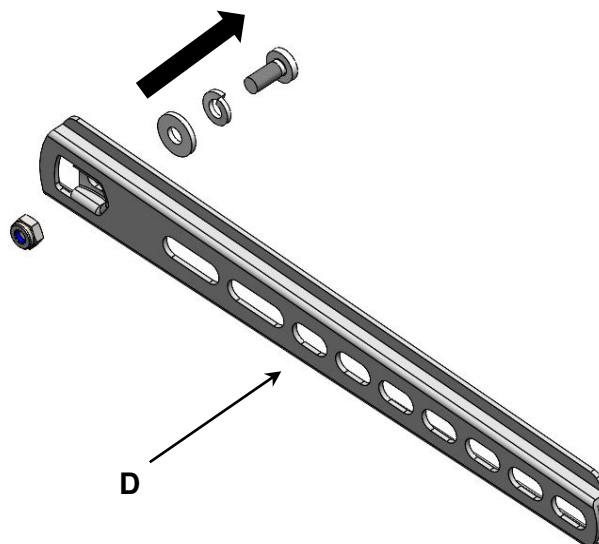


2

Page 6

1b Hole pattern above 200x200 mm up to 600x400 mm:

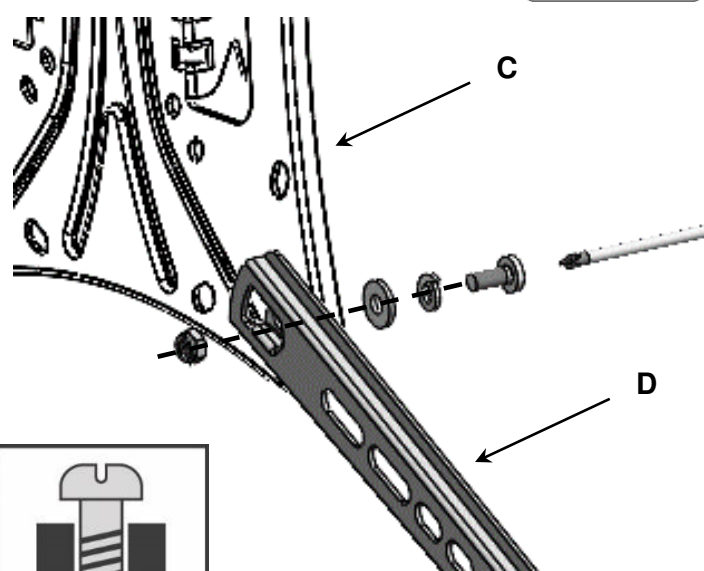
① Disassemble the screws.



② connect the 4 adaptors to the TV plate and reassemble the screws.

Flat screen

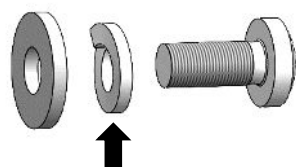
Flat TV



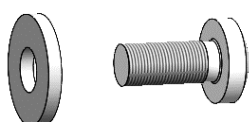
P1



Right

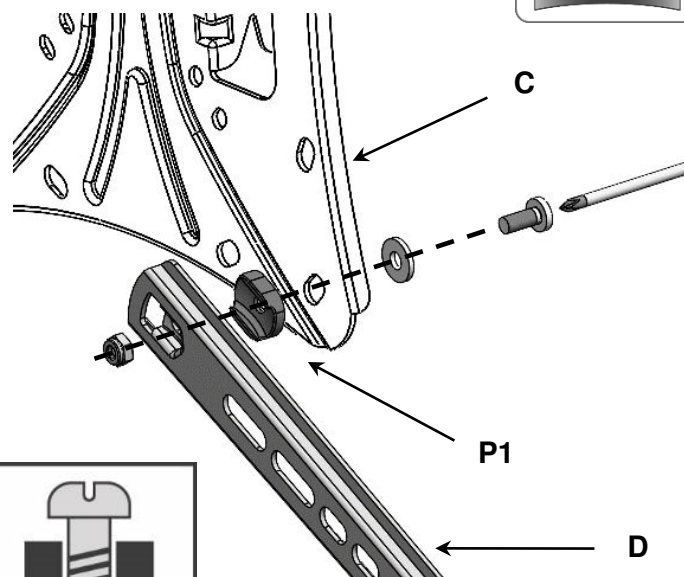


Wrong



Curved screen

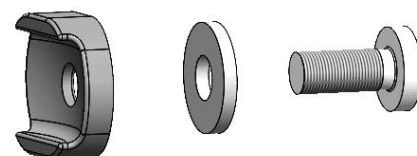
Curved TV



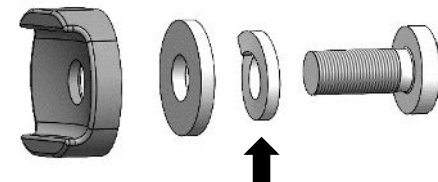
P1

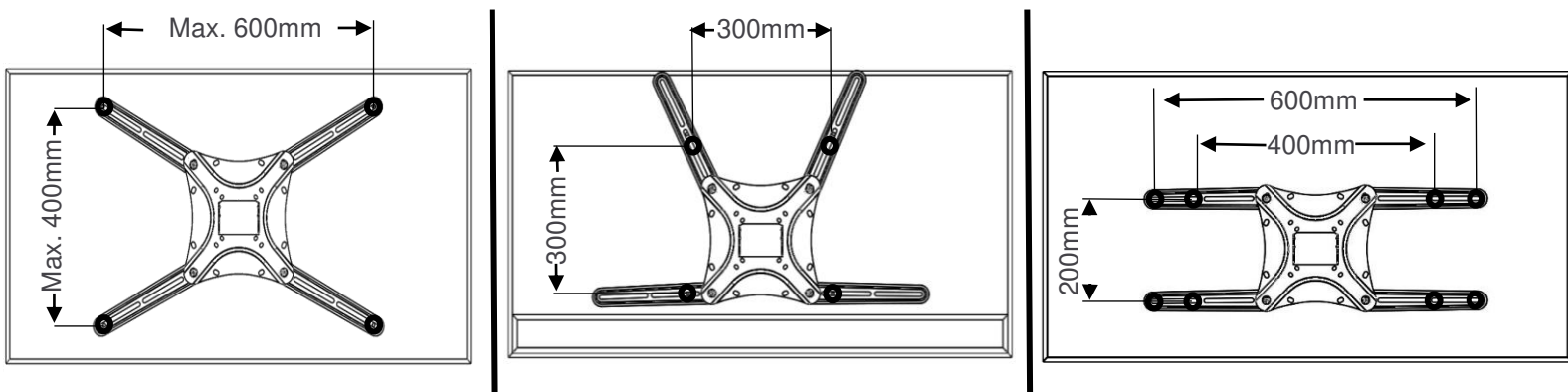


Right



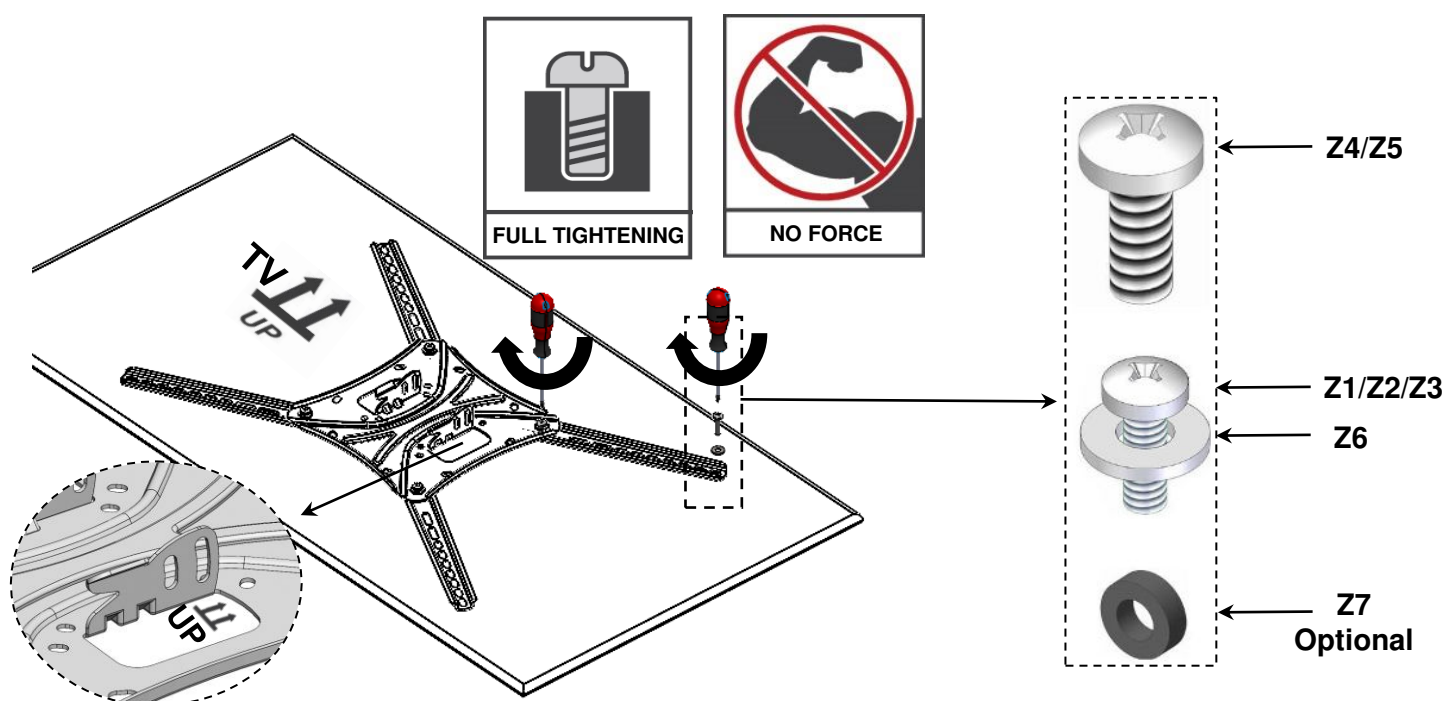
Wrong





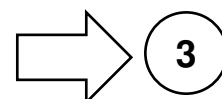
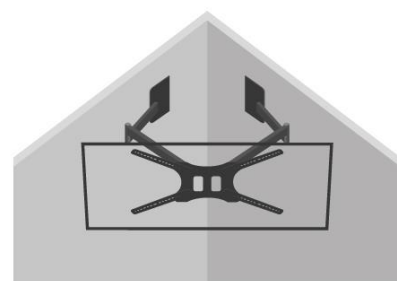
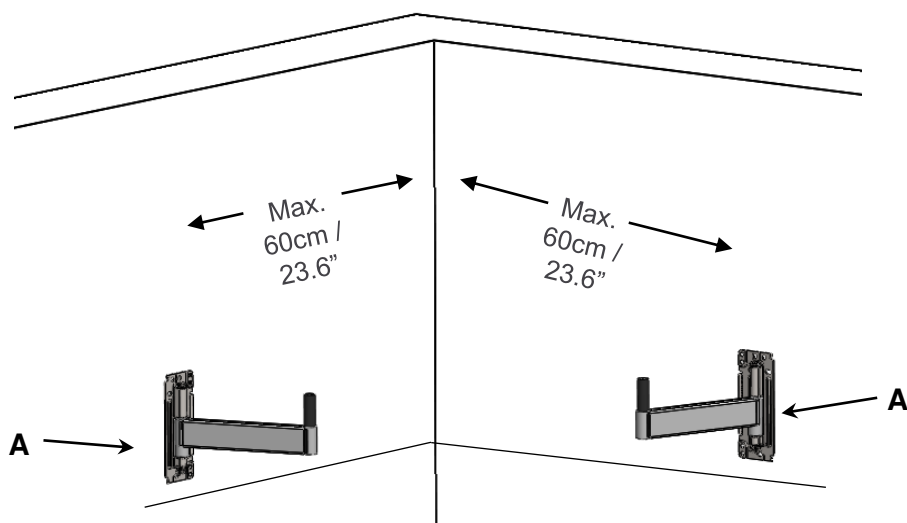
For more positioning options turn to page 12.

Connect the TV Plate with the Adaptors to the TV in all 4 connection holes.



Optional – Corner installation

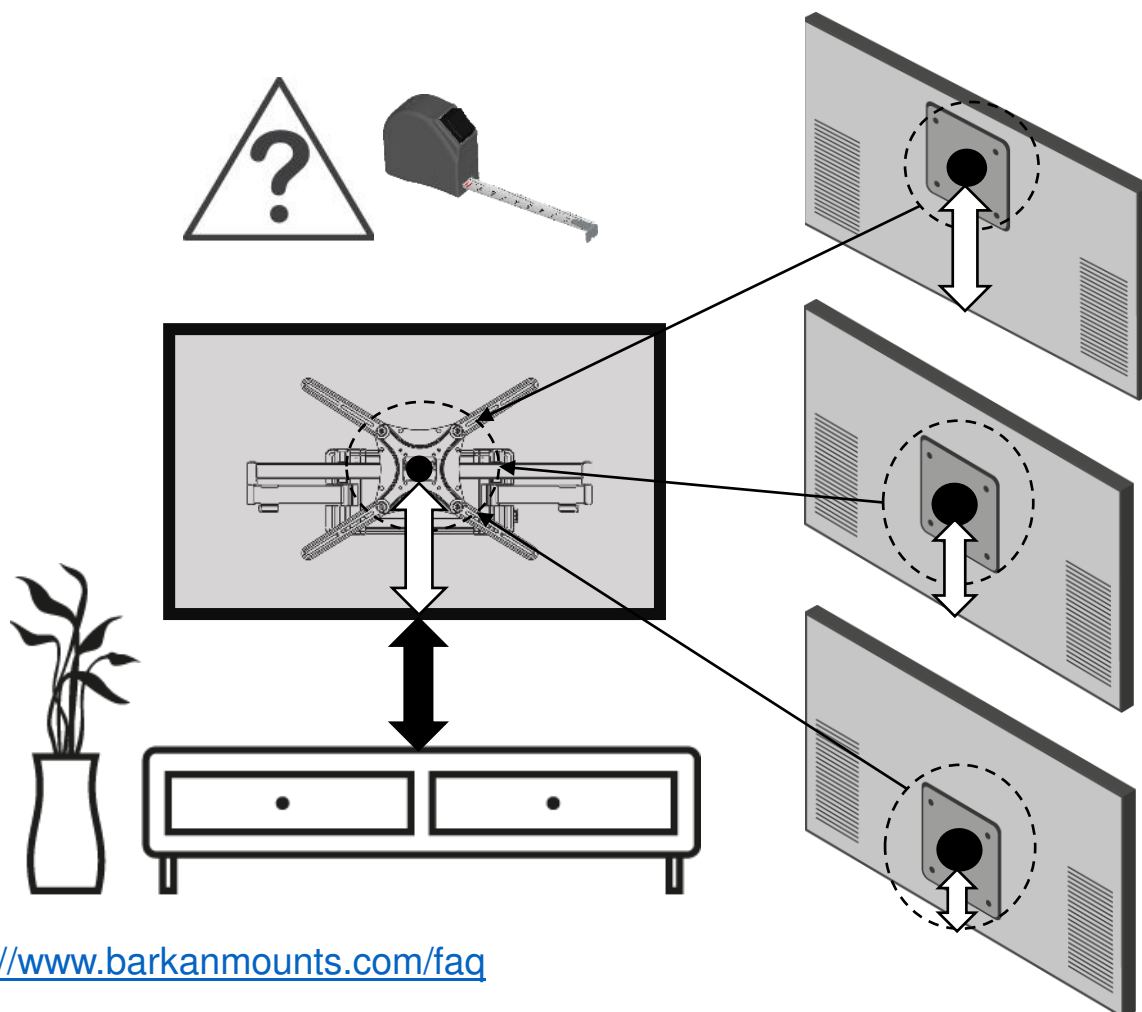
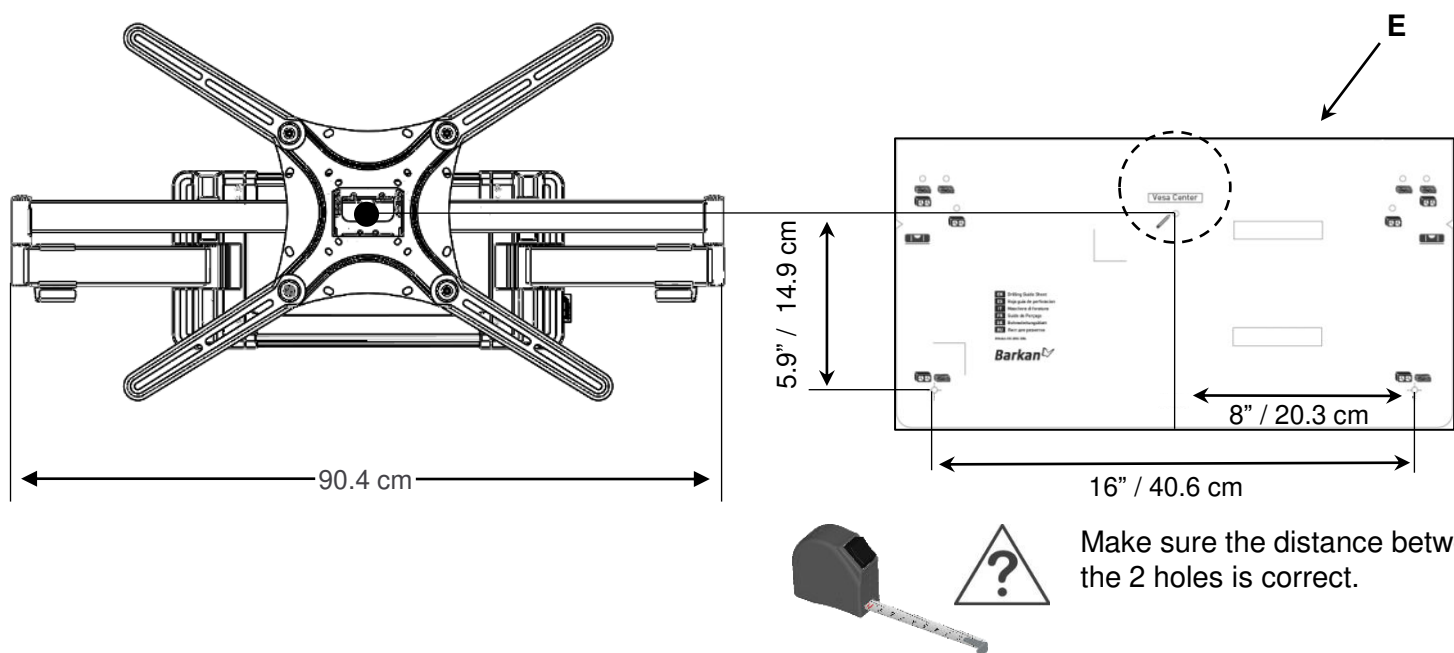
Functionality may vary depending on the distance from the corner.



2

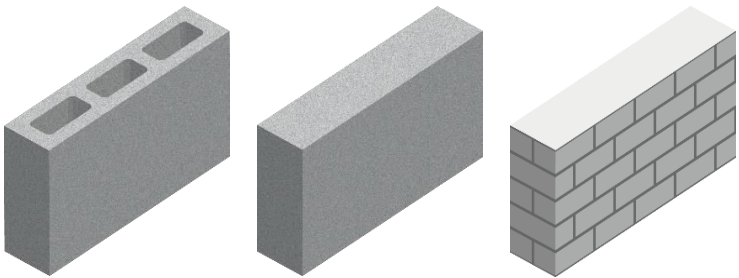
Install the bracket on the Wall

Measure the distance between the location of the TV's mounting holes' center and the bottom of the TV, in order to set the required height of the TV.

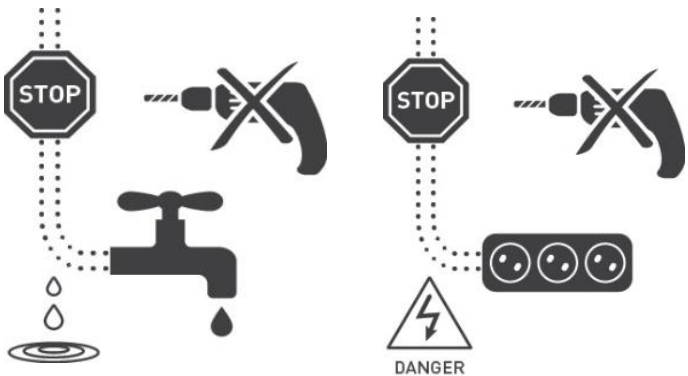
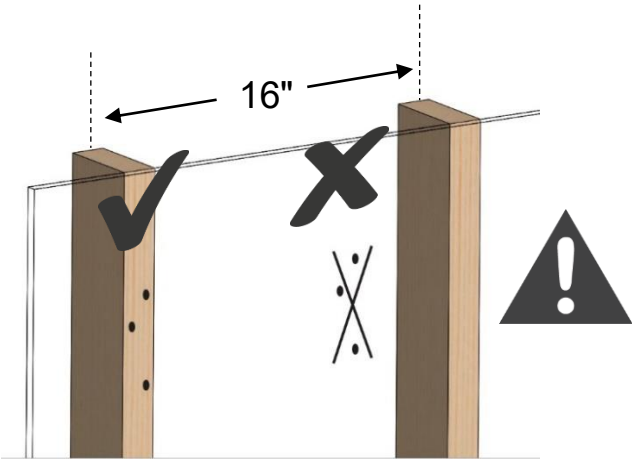


<https://www.barkanmounts.com/faq>

3

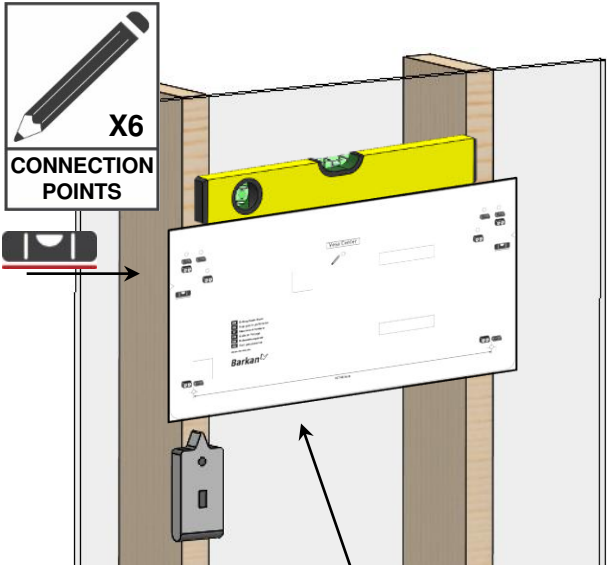


Make sure all holes are drilled inside the studs.



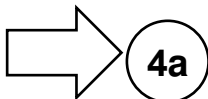
4

Mark the holes on the wall according to the required height.

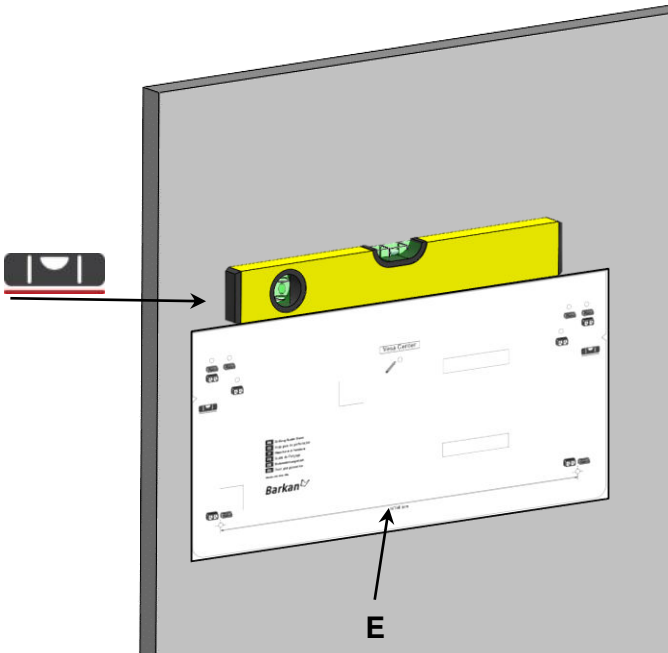


Use a Stud Finder

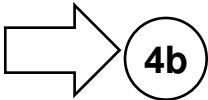
E



4a

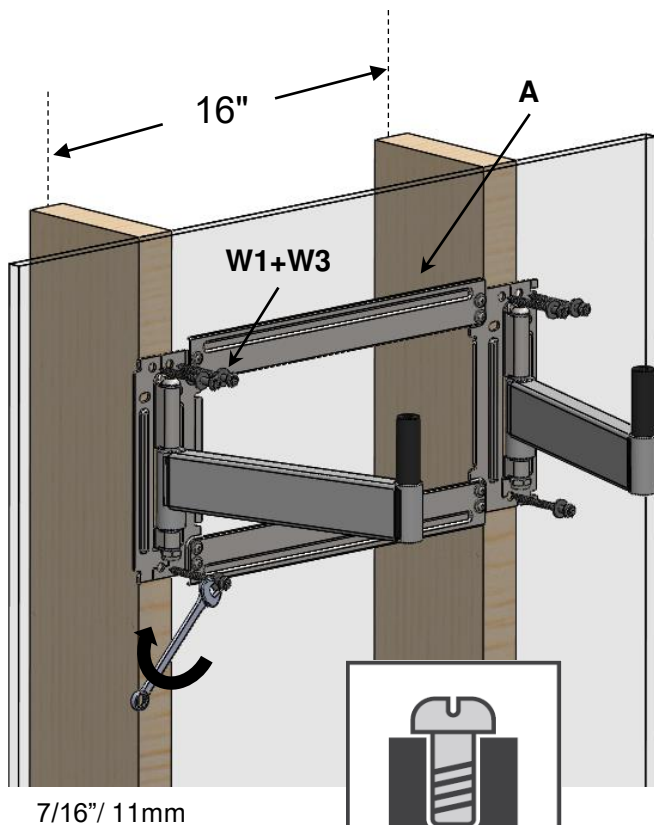
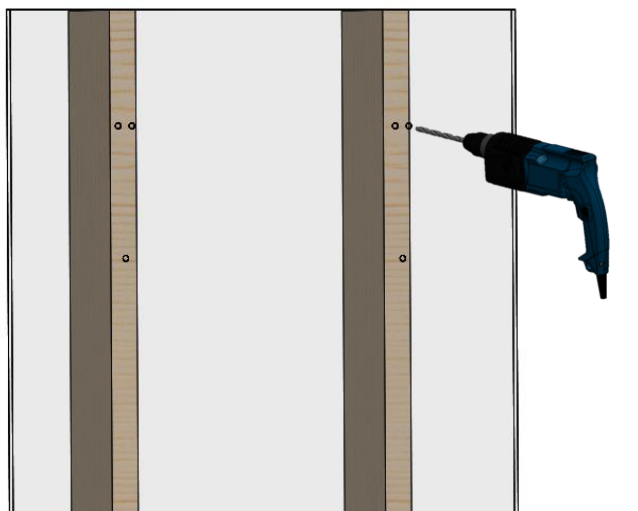
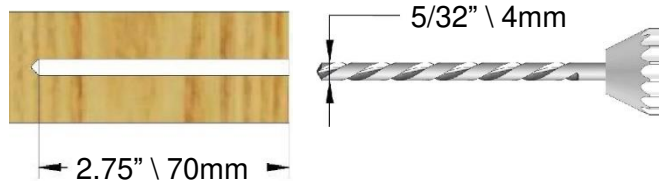


E



4b

Drill with 5/32" \ 4mm drill bit.

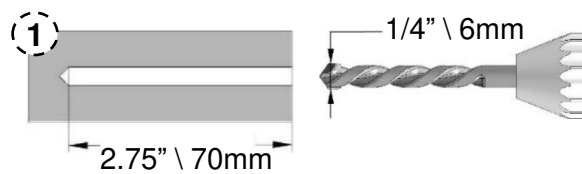


7/16" \ 11mm

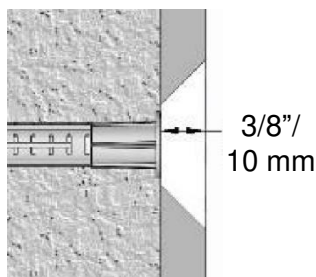
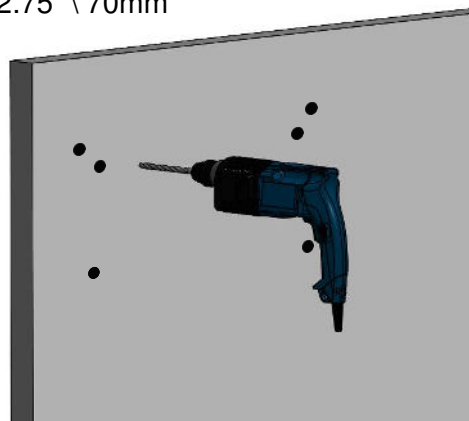
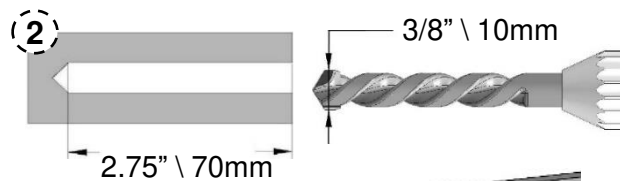


FULL TIGHTENING

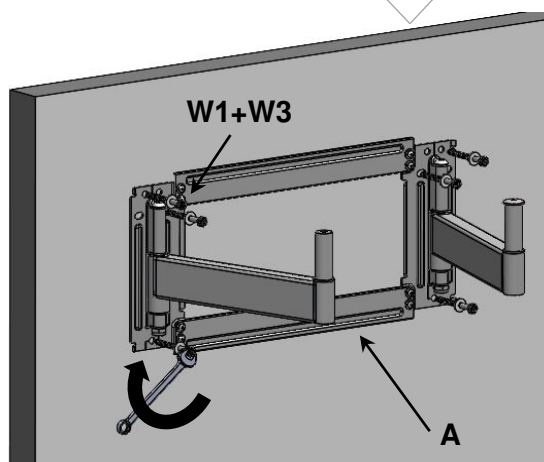
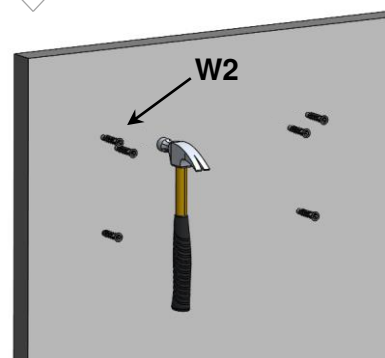
First use 1/4" \ 6mm drill bit.



Afterwards use 3/8" \ 10mm drill bit.



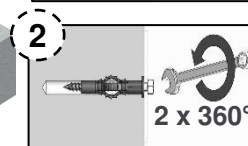
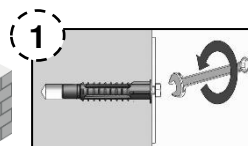
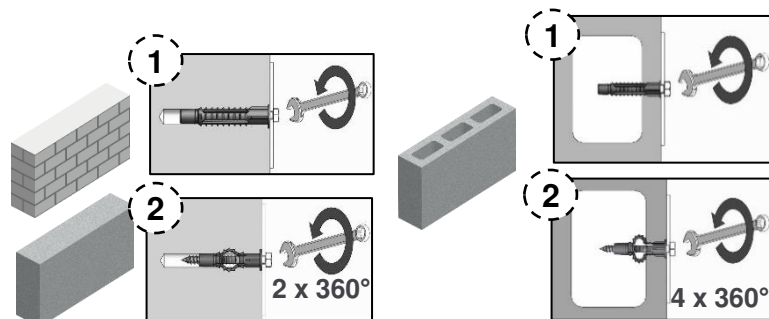
The anchor must be sunk at least 3/8"/10 mm into the plaster coating.



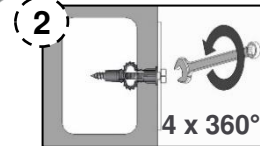
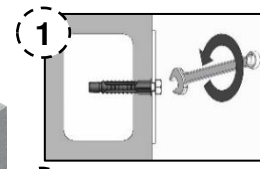
7/16" \ 11mm



FULL TIGHTENING

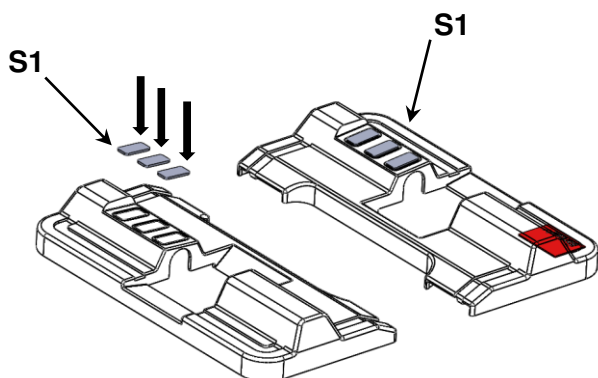


2 x 360°

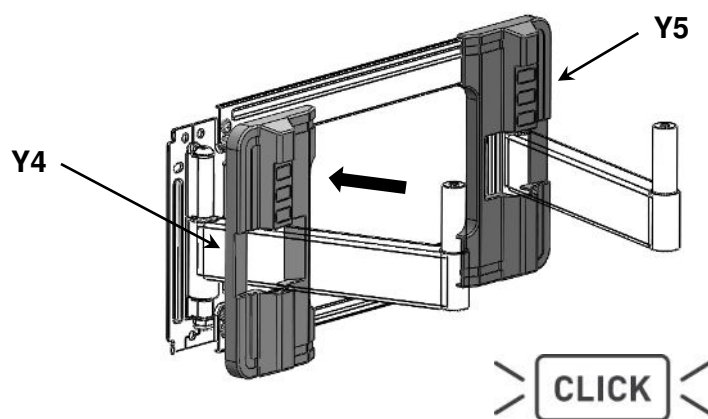


4 x 360°

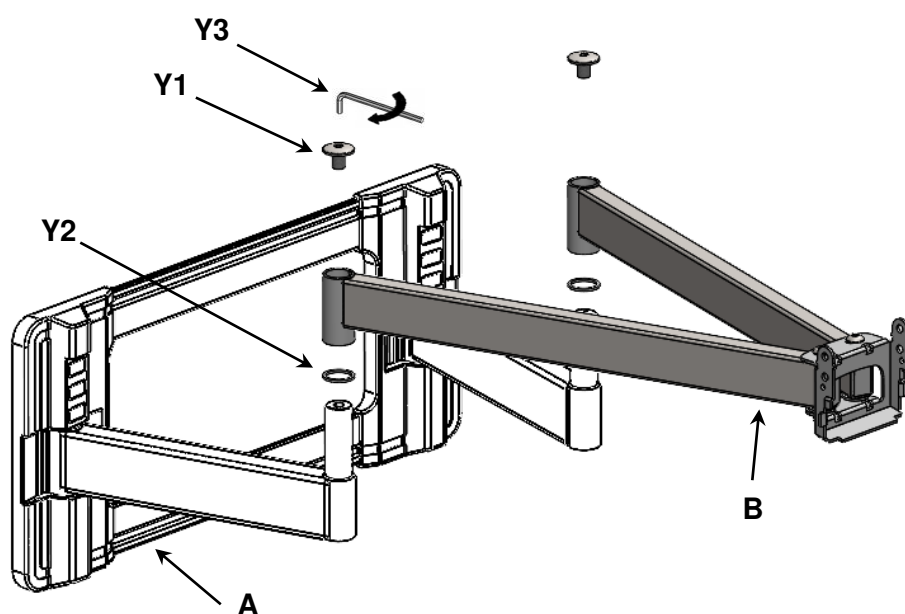
- 5** Paste the 6 stickers on the Plastic Covers.



- 6** Assemble the Wall Plate Plastic Covers.

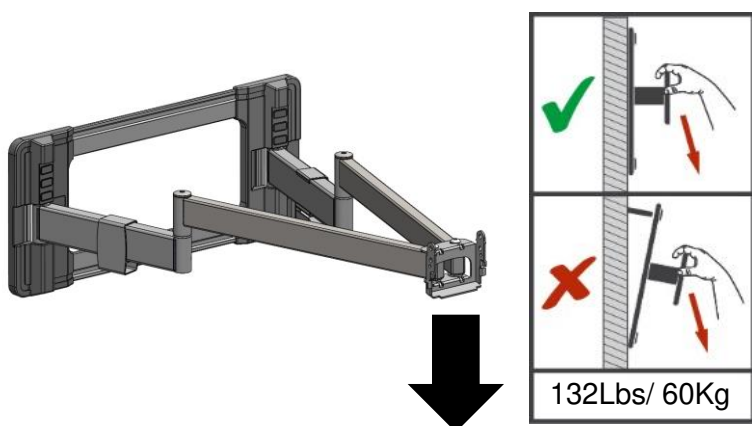


- 7** Connect the Front Arms (B) to the Bracket (A).

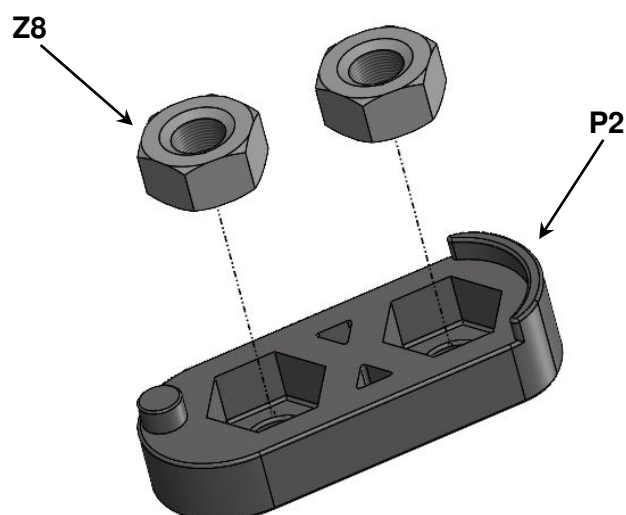


- 8** Weight test.

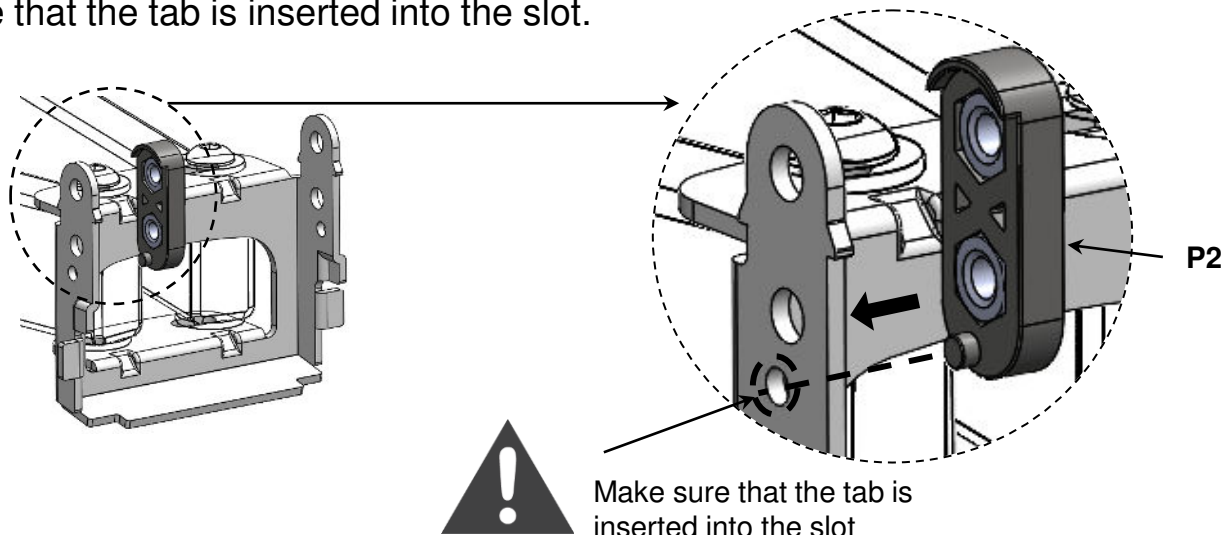
Apply force on the upper part of the Bracket and make sure it is well connected.



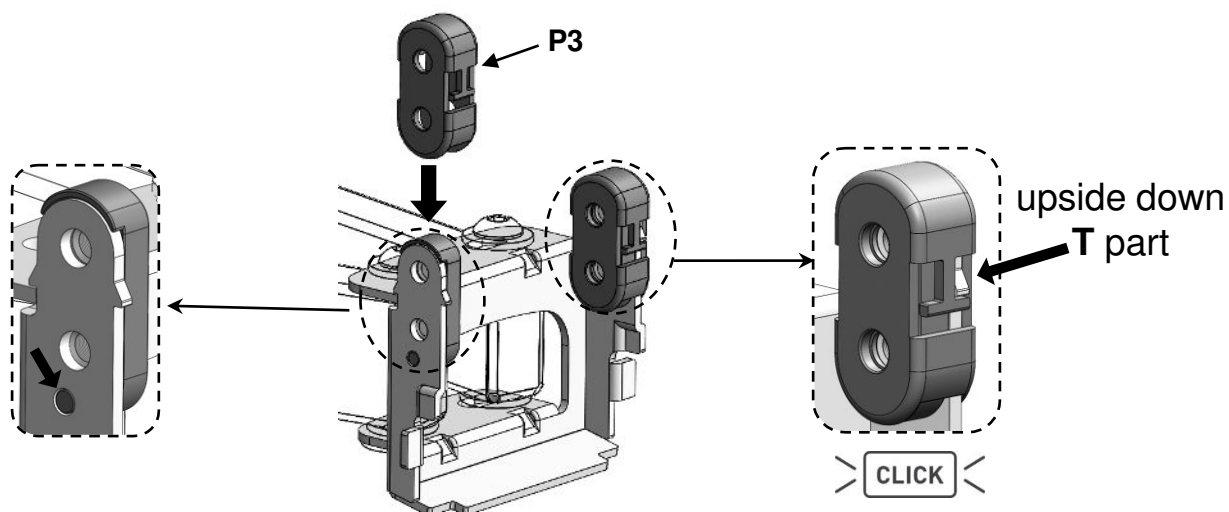
- 9** Place two nuts (Z8) in the nut-housing (P2).



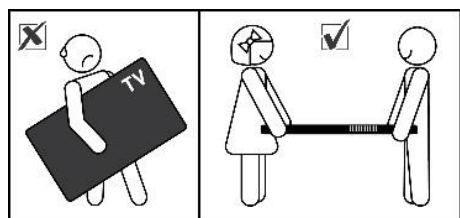
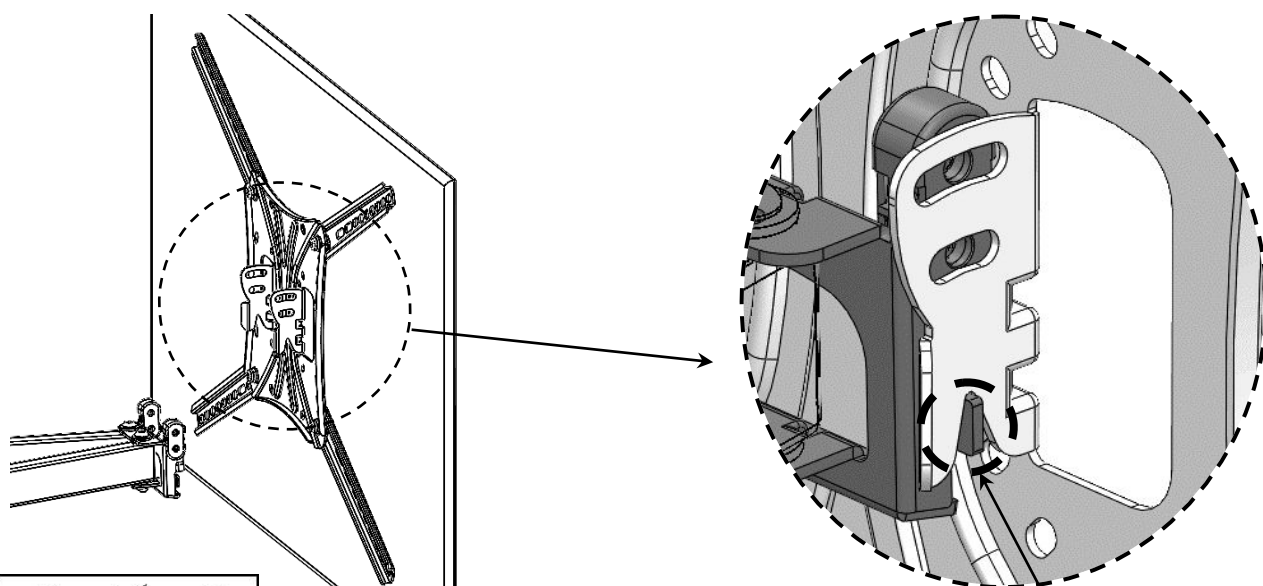
- 10** Assemble the nut-housing (P2) make sure that the tab is inserted into the slot.



- 11** Assemble part (P3) on the nut-housings (P2). push P3 down until the small part that looks like an upside down "T" passes the highlighted tooth.

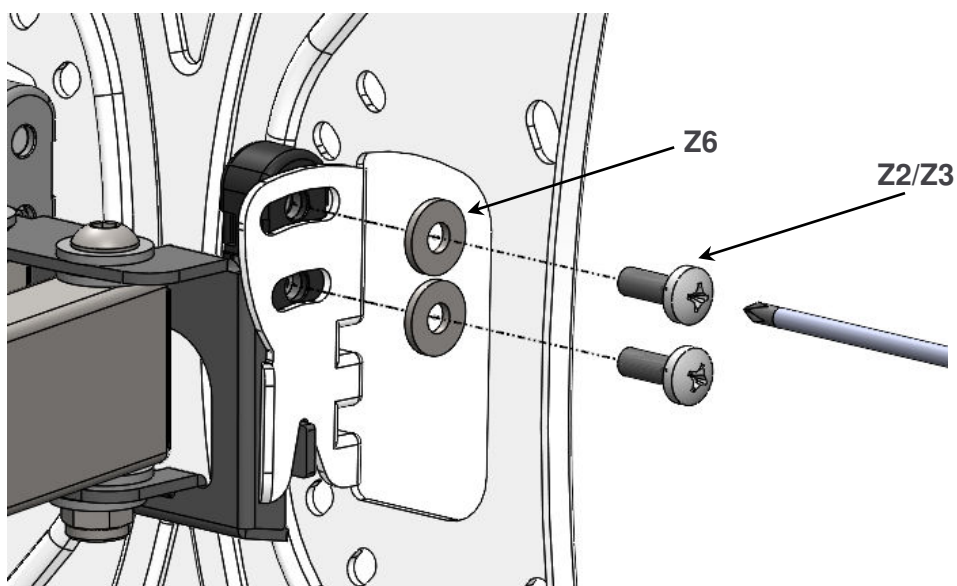


- 12** Place the bracket upright and connect the TV plate with the TV.

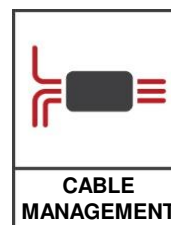
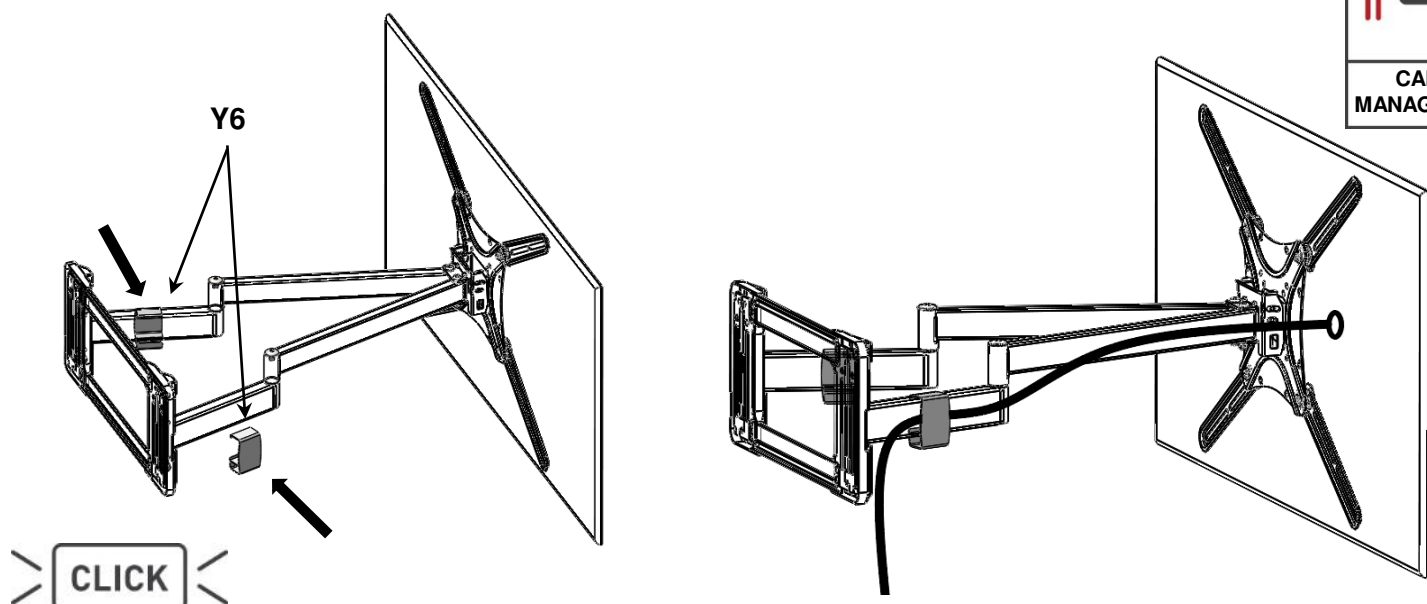


Make sure that the TV Plate slots are positioned properly on 2 small beams (Front Arms).

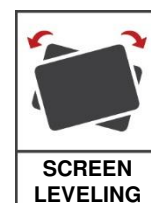
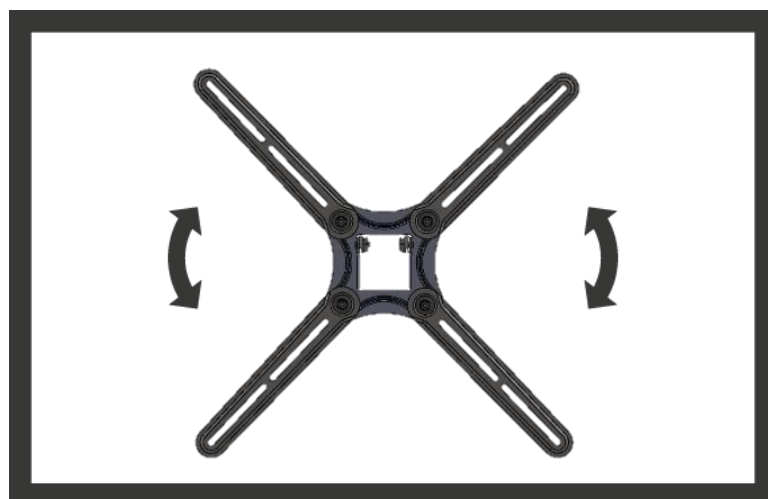
- 13** Insert and tighten the screws from both sides to create friction for the tilt mechanism. Adjust the TV tilt angle carefully.



- 14** Place the TV cables in the Cable Management.



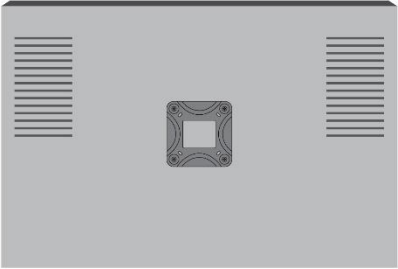
- 15** Level the TV.



BACKSCREEN CONNECTION POSITIONING OPTIONS

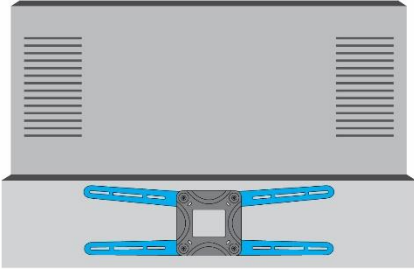
1

75x75, 100x100,
100x200, 200x100, 200x200



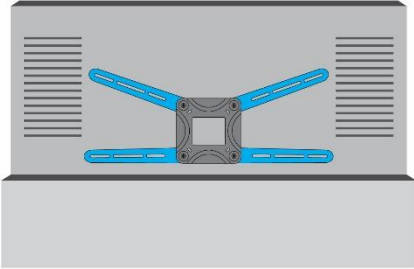
2

300x200,
400x200, 600x200



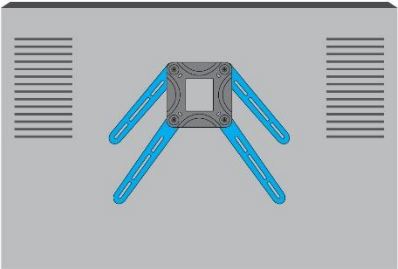
3

200x100, 300x300,
400x300, 600x200, 600x300



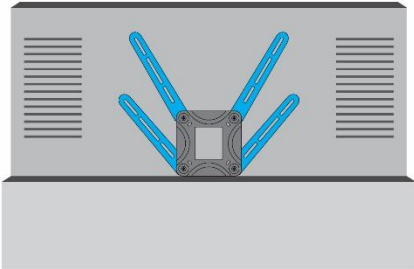
4

300x300



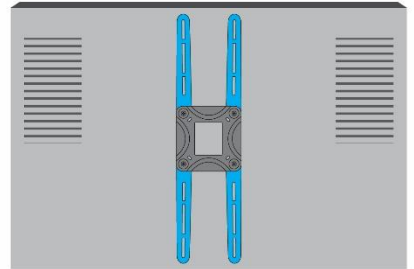
5

300x300



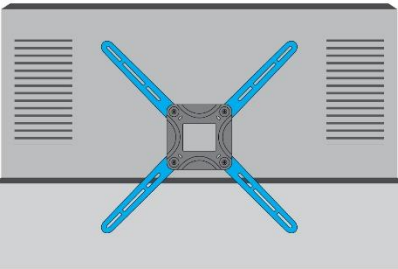
6

200x300



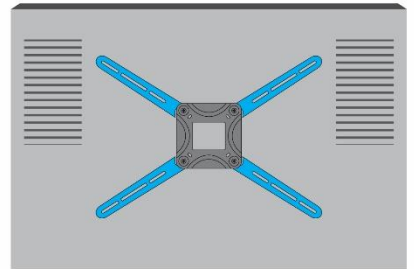
7


300x300,
300x400, 400x400, 600x400



8

400x300, 600x400




www.barkanmounts.com/FAQ